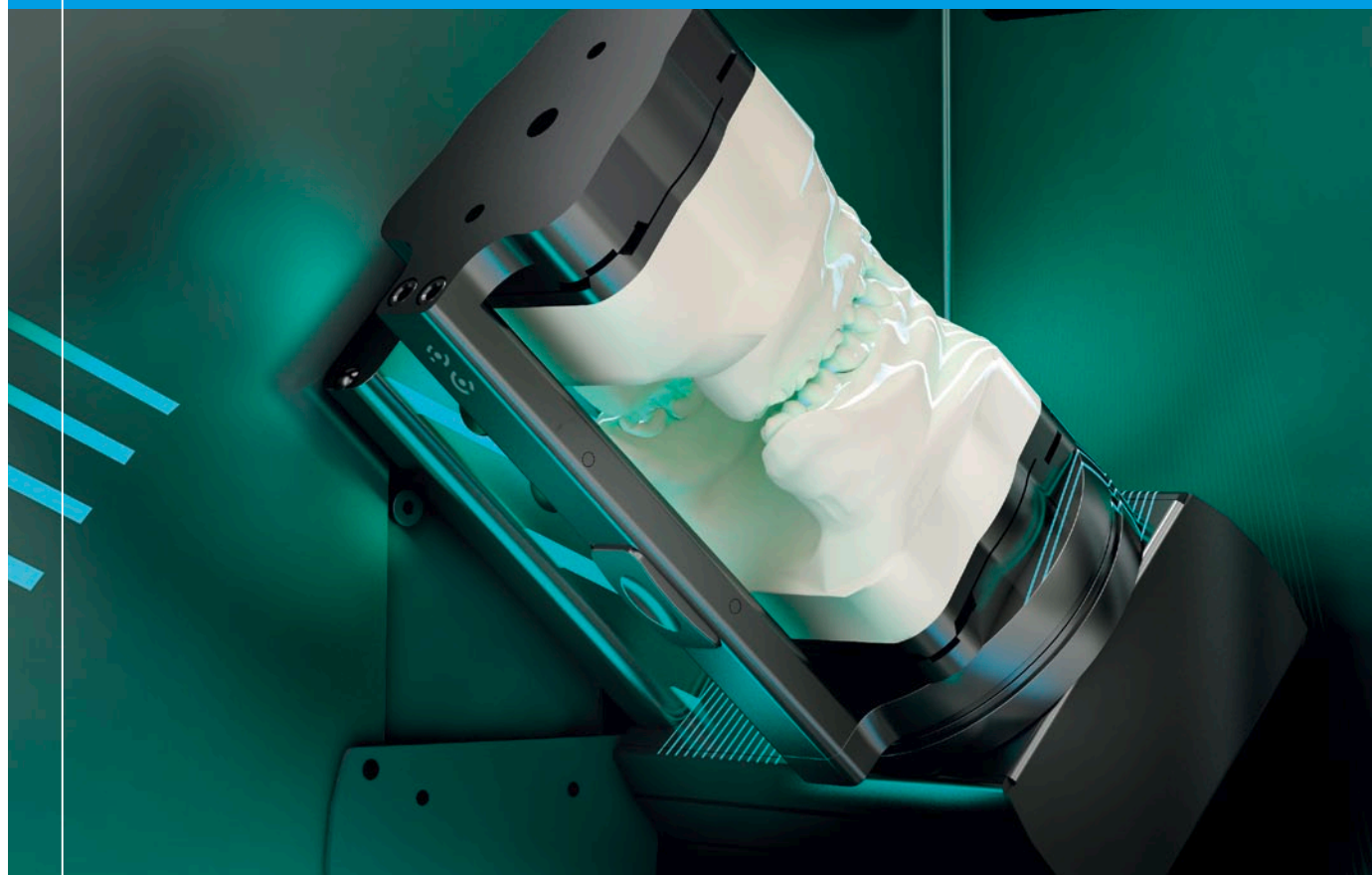


Zfx™ Synchronizer



Instruction for use

Zahn success formula



Zfx

Instruction for use Zfx™ Synchronizer



Important notes

V1-19.09.2012

This manual is part of the product. Ensure that you read this manual carefully and keep it in a safe place for future reference. Read and follow all instructions for use. Failure to observe the information contained in this manual relieves the manufacturer of any liability or obligation.

Zfx GmbH

Kopernikusstrasse 27, 85221 Dachau, Deutschland, Tel. +49 8131 / 33 244 - 0, Fax +49 8131 / 33 244 - 10

Email: info@zfx-dental.com, www.zfx-dental.com

1. General notes

The Zfx™ Synchronizer is available for the following systems:

Part number	Description
ZFX02001228	Arti-Synchronizer for Zfx™ Evolution - ARTEX®
ZFX02001230	Arti-Synchronizer for Zfx™ Evolution - SAM®
ZFX02001231	Arti-Synchronizer for Zfx™ Evolution - STRATOS®
ZFX02001232	Arti-Synchronizer for Zfx™ Evolution - KAVO®
ZFX02001233	Arti-Synchronizer for Zfx™ Evolution - Artex® 126 mm height®
ZFX02001234	Arti-Synchronizer for Zfx™ Evolution - PANADENT®

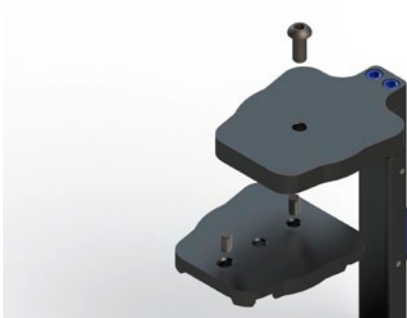
Buy a set of original split cast plates (e.g. Axiosplit® SAM Dental, Splitex® Amman Girrbach or Splitcast KAVO®) for your system.

The Zfx™ Synchronizer is also compatible with Adesso® Split and multi-split® Baumann Dental.

Please note:

To adjust the Zfx™ Synchronizer you need Loctite adhesive (Art. 330) with Activator (Art. 7388) available in all specialized shops. If you do not have a Splitcast system for your articulators in use, then the Zfx™ Synchronizer is not suitable.

2. Adjustment Instruction



- 1 Insert the base in the upper part of the Zfx™ Synchronizer and put on hand-tighten. We recommend the use of Loctite 243.

i Please note:
The accompanying dowel pins are used for orientation of the base.



- 2 Check the centering wrench on the surface cleanliness and tighten the Allen screw.



- 3 Turn the Zfx™ Synchronizer and open it. Insert the centering wrench.

i Important:
The opening of the Allen must show towards the top of the Zfx™ Synchronizer.



- 4 Check the collimate plate for cleanliness and put carefully on the centering wrench.



- 5 Close the Zfx™ Synchronizer. The centering wrench must thereby be tilted backwards.



- 6 Check that the button locks and that the collimate plate has no contact with the lower part of the Zfx™ Synchronizer.



- 7 Gluing the lower collimate plate with Loctite Glue (Art. 330): spray the collimate plate with Activator (Art. 7388).

Put sufficient adhesive on the bottom of the plate. Close the Zfx™ Synchronizer immediately and put pressure on it for approximately 5 seconds until the glue is fully adapted on both sides. Curing for approx. 10 minutes.